



BUSINESS PRESENTATION

COMMUNITY THROUGH SPORTS



PADEL TENNIS



- FASTEST GROWING SPORTS IN THE WORLD
- 25 MILLION PLAYERS GLOBALLY
- 40.000 PADEL COURTS WITH 26% ANNUAL GROWTH RATE
- 9.6% ANNUAL MARKET SIZE GROWTH
- SPAIN & MEDITERRANEAN LEADS THE SPORTS, FOLLOWED BY SCANDINAVIA
- GOOGLE SEARCHES FOR PADEL TENNIS INCREASED 385% IN THE LAST 5 YEARS
- **PADEL IN BRITAIN**
 - 14 FACILITIES IN LONDON, MOSTLY IN WESTERN SIDE
 - 129 FACILITIES IN BRITAIN, WHEREAS SPAIN HAS MORE THAN 10.000



PLAYER PROFILE

PERSONA:

DEMOGRAPHY

- GENDER: BOTH FEMALE & MALE
- AGE: 25 TO 45 YEARS
- EDUCATION: UNIVERSITY OR HIGHER
- OCCUPATION: WHITE COLLAR, DOCTOR, LAWYER ETC.
- INCOME LEVEL: MIDDLE TO HIGHER INCOME LEVELS

GEOGRAPHICS

- LIVES IN URBAN AREAS

PSYCHOGRAPHICS

- ENJOYS FOLLOWING TRENDS
- VALUES SHARING

BEHAVIORAL

- SPORTS IS ESSENTIAL, BUT IT IS ALSO FOR FUN
- PREFER GROUP ACTIVITIES



OPTA PADEL

*ENTREPRENEURIAL MIND,
ENTERTAINING SOUL*

- OPTA PADEL AIMS TO BECOME THE LARGEST PADEL TENNIS FACILITY OPERATOR OF UK
- BY OPENING 1ST FACILITY IN 2024, OUR AIM IS TO BUILT AND OWN AT LEAST 50 COURTS BY 2027
- THE FIRST 5 FACILITY OF OPTA WILL BE LOCATED IN LONDON AND SPREAD TOWARDS NEARBY CITIES.
- OPTA PADEL WILL NOT ONLY PROVIDE A COURT TO PLAY, IT WILL ESTABLISH A CLUB ATHMOSPHERE, WHERE PEOPLE SPEND TIME EATING, DRINKING, SOCIALIZING. THIS BRINGS A COMMUNITY TO BE PROMOTED.

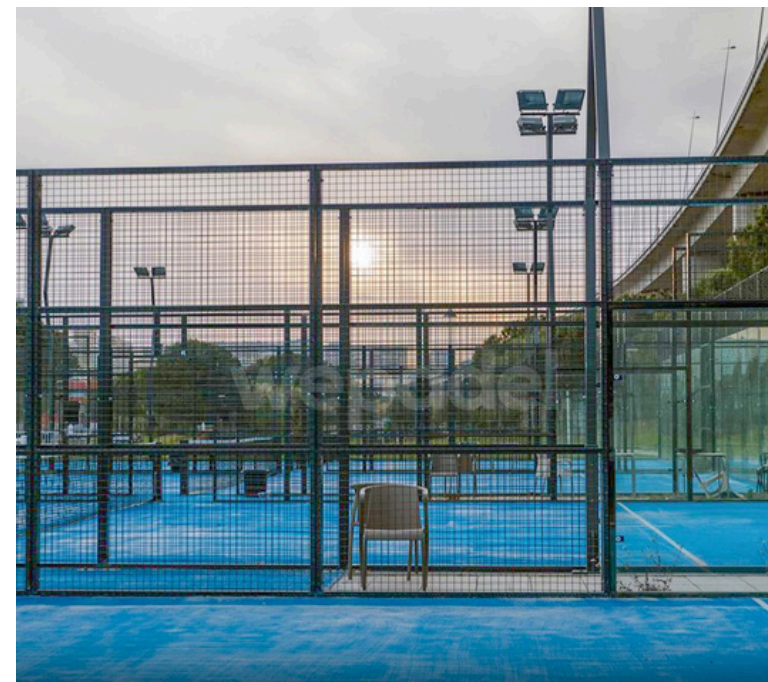


OPTA PADEL LONDON 1

- THE REQUIRED SPACE FOR PROJECT WILL BE 1500 SQUARE METER (1800 SQUARE YARD). THE SPACE CAN CHANGE BETWEEN 1200 TO 2000 SQUARE METER.
- THE PROJECT CONSIST OF:
 - 4 PADEL COURTS,
 - 1 MAIN BUILDING WITH 2 CHANGING ROOMS, TOILETS AND MANAGEMENT ROOM
 - CAR PARK



ROOFED COURT



OPEN COURT

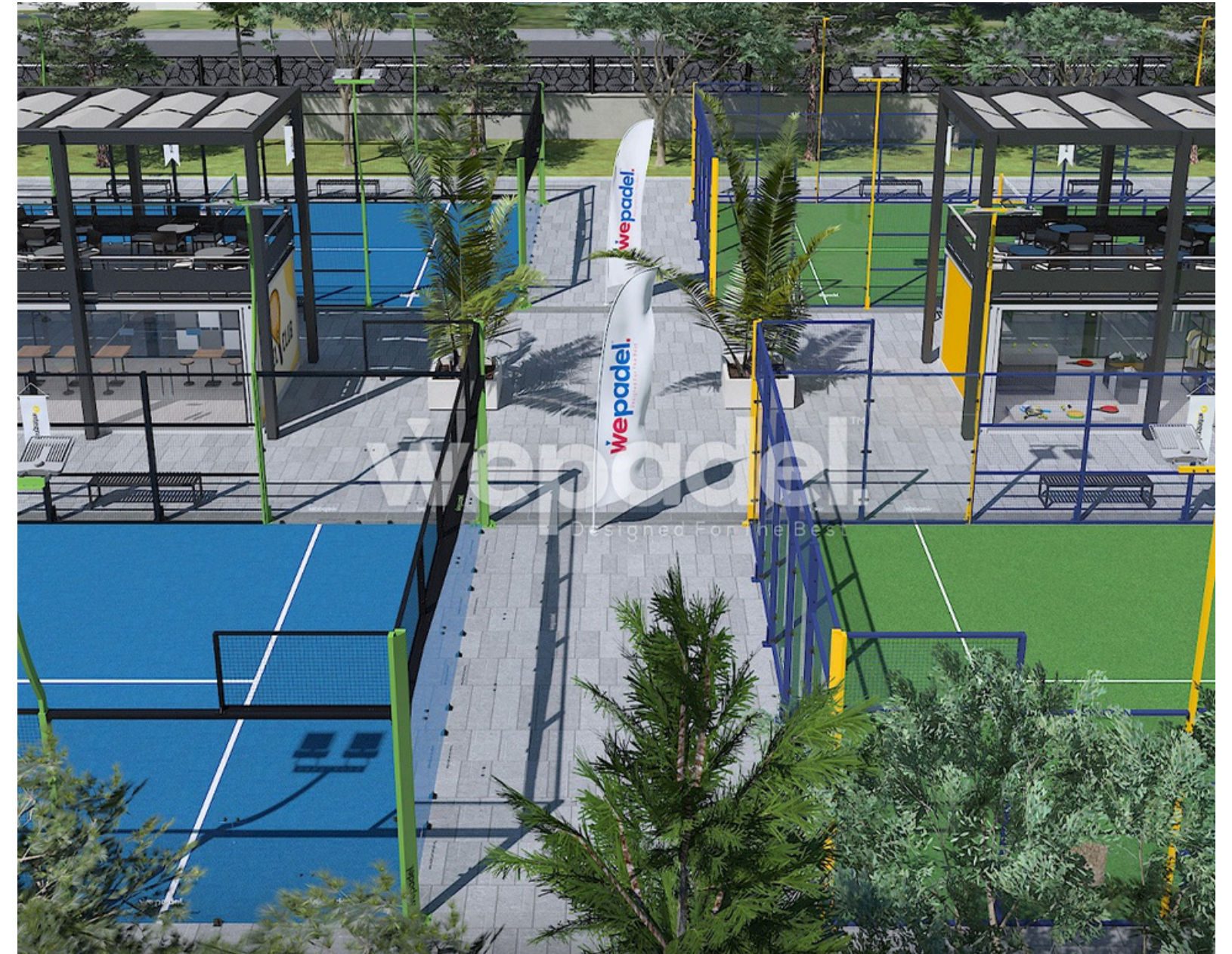


PANORAMIC COURT

FACILITY PROJECT



FACILITY



SHARED SPACES

COURT TYPES



ORIGIN OPEN



PANORAMIC OPEN

COURT TYPES



ROOFED COURT



COVERED COURT



PARTNERSHIPS

BEFORE STARTING OPERATIONS, WE COMPLETED PARTNERSHIPS WITH BELOW BRANDS TO PROMOTE OUR VENUES:

- WEPADEL: PRODUCER OF PADEL COURTS
- TERIO SPORTSWEAR: PRODUCER OF SPECIALIZED PADEL SPORTSWEAR
- HEAD: WELL-KNOWN TENNIS EQUIPMENTS PRODUCER, ALSO INVOLVED IN PADEL PRODUCTS
- REDBULL: ENERGY DRINKS BRAND THAT HIGHLY INVOLVED IN SPORTS COLLABORATIONS